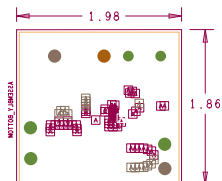


PHYSICAL BOARD DIMENSIONS
& LAYER STRUCTURE



| ISL854102DEMO3Z_REVA | | | |
|-----------------------|-------|--------|-----|
| ALL UNITS ARE IN MILS | | | |
| FIGURE | SIZE | PLATED | QTY |
| ⊙ | 8.0 | PLATED | 12 |
| ⊠ | 12.0 | PLATED | 62 |
| ⊙ | 80.0 | PLATED | 2 |
| ⊙ | 110.0 | PLATED | 6 |

NOTES:

1. THIS BOARD IS RoHS COMPLIANT.
2. PRINTED WIRING BOARD DESIGN AND ACCEPTANCE CRITERIA SHALL BE IAW WITH THE REQUIREMENTS OF IPC-D 275 AND IPC- A -600.
3. MATERIAL FR4 - 170TG (RoHS COMPLIANT). 2 OZ COPPER , BOARD THICKNESS .062'
4. APPLY SOLDER MASK BOTH SIDES OVER BASE COPPER IAW IPC-SM-840. CLASS 2 (LPI) (INTERSIL RED MASK).
5. ALL PATTERNS ARE VIEWED FROM THE PRIMARY SIDE LOOKING THROUGH THE BOARD
6. UNLESS OTHERWISE SPECIFIED ALL HOLE DIAMETER ARE AFTER PLATING.
7. SILKSCREEN BOTH SIDES WITH WHITE NON CONDUCTIVE EPOXY BASED INK.
8. PWB MUST BE 100% ELECTRICALLY TESTED FOR SHORTS AND CONTINUITY. USE NETLIST PROVIDED ISL854102DEMO3Z_REVA
9. MARK DATE CODE AND MANUFACTURERS IDENTIFICATION ON SOLDER SIDE PER IPC- 6011 AND IPC - 6012
10. ALL EXTERNAL CONDUCTOR SURFACES SHALL BE GOLD PLATED THE REST OF THE BOARD SHALL BE IMMERSION GOLD.
11. TOLERANCE ON ALL DRILL HOLES SHALL BE IAW IPC-D-2221 & 2222 UNLESS OTHERWISE SPECIFIED.

| | | | |
|--------------|----------------|--------------------------------------------|----------|
| ENGINEER : | DESIGN BY: | BOARD NUMBER: | |
| MICHELE LIM | MICHELE | ISL854102DEMO3Z | |
| Released By: | Date Drawn: | 1001 MURPHY RANCH RD MILPITAS, CA 95035 | |
| Updated By: | Date Released: | | |
| intersil | Date Updated: | MAK6 | FORM 10 |
| | FILENAME: | ISL854102DEMO3Z | REV A |